

Lift systems



- ▶ AVENTOS HF – bi-fold lift system
- ▶▶ Standard | SERVO-DRIVE

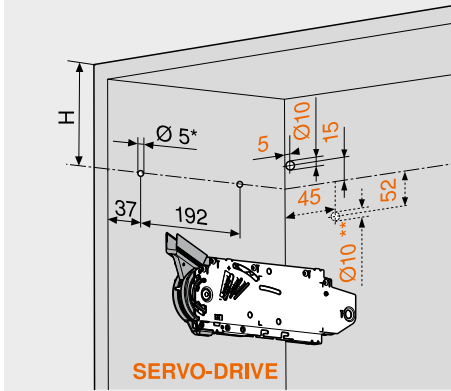
Wooden fronts and wide alu frames

Webcode
DQD8YM

Planning

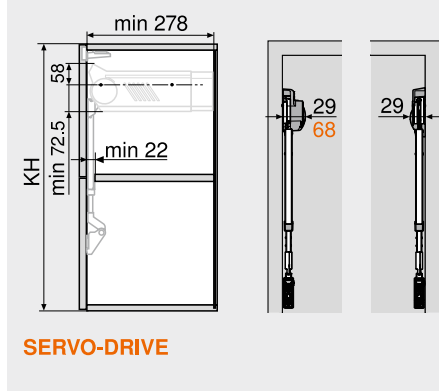
Symmetrical

Drilling position

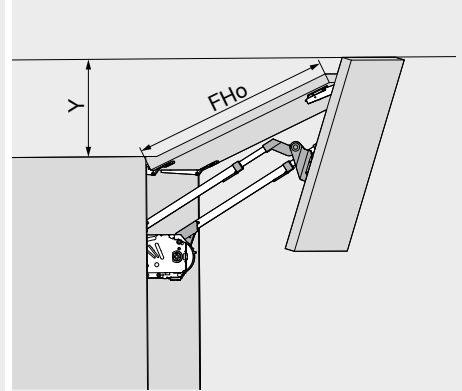


Cabinet height KH (mm)	H (mm)
480–549	KH x 0.3 – 28
550–1040	KH x 0.3 – 57
4 x chipboard screws Ø 4 x 35 mm	
Drilling for SERVO-DRIVE distribution cable, left only	
* Drilling depth 5 mm	
** Alternative drilling	

Space requirement

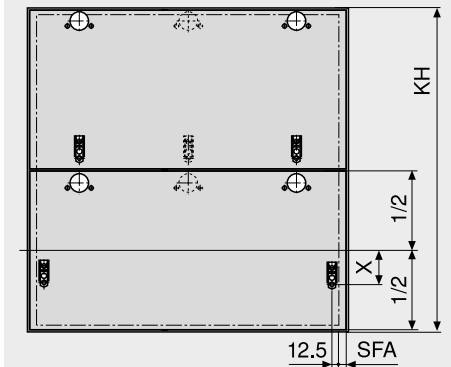


KH	Cabinet height
-----------	----------------



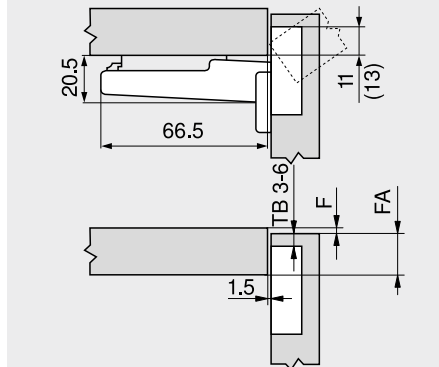
Opening angle stop	Y (mm)
Without	FHo x 0.44 + 38
104°	FHo x 0.24 + 34
83°	0
FHo	Upper front height

Front assembly



Cabinet height KH (mm)	X (mm)	
480–549	70	68
550–1040	47	45
SFA	Front overlay of the side panel	

CLIP top 120° hinge



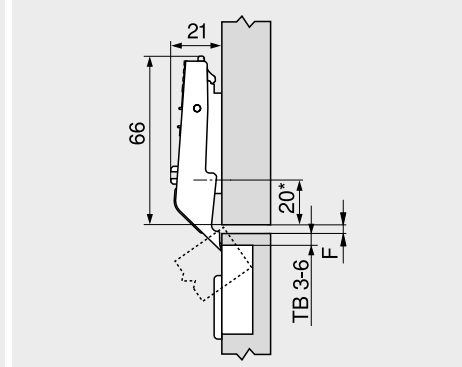
TB	Drilling distance
F	Gap
FA	Front overlay
()	CLIP top 120° special hinge

Drilling distance TB

MD	Front overlay FA (mm)												
	5	6	7	8	9	10	11	12	13	14	15	16	17
0										3	4	5	6
3								3	4	5	6		
6				3	4	5	6						
9	3	4	5	6									

MD Mounting plate spacing (mm)
With the CLIP top 120° special hinge, the front overlay is always 2 mm larger

CLIP top centre hinge



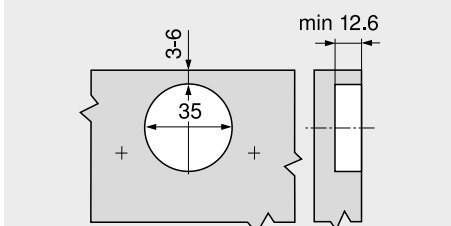
TB	Drilling distance
F	Min. gap 1.5 mm
*	37 mm for cruciform mounting plates (37/32)

Drilling distance TB

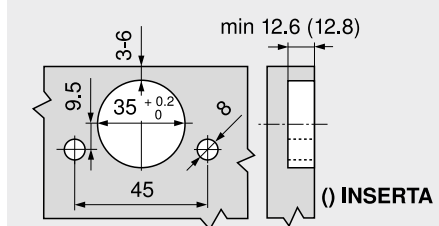
MD	Horizontal gap F (mm) between fronts					
	3	4	5	6		
0						
3					6	5
6					4	3
9						

MD Mounting plate spacing (mm)

Screw-on



INSERTA | EXPANDO



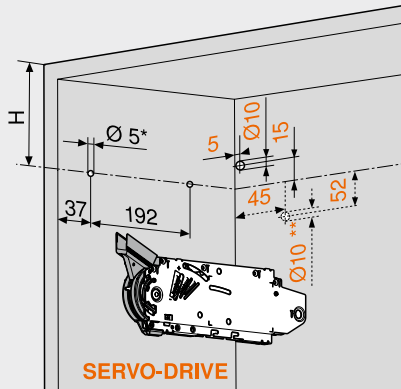
Wooden fronts and wide alu frames

Webcode
DQD8YM

Planning

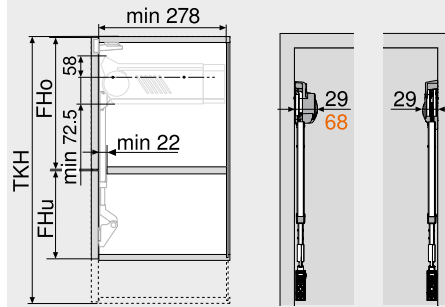
Asymmetrical

Drilling position



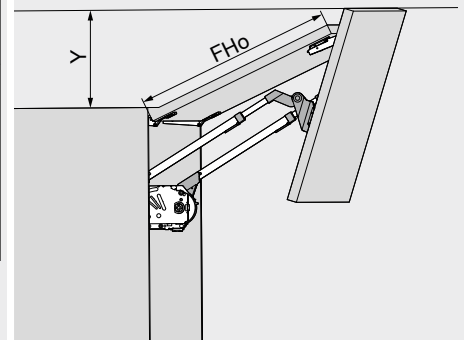
Theoret. cabinet height TKH (mm) H (mm)
480–549 TKH x 0.3 – 28
550–1040 TKH x 0.3 – 57
4 x chipboard screws Ø 4 x 35 mm
Drilling for SERVO-DRIVE distribution cable, left only
* Drilling depth 5 mm
** Alternative drilling

Space requirement



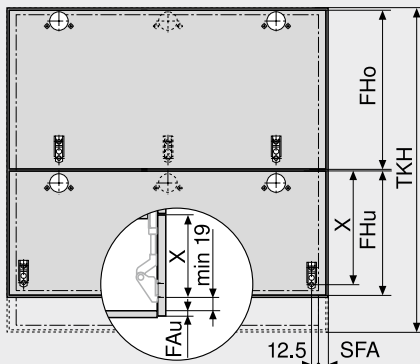
SERVO-DRIVE

TKH = FHo (mm) x 2 + gaps
TKH Theoretical cabinet height
FHo Upper front height
FHu Lower front height



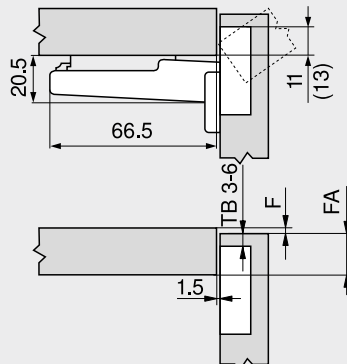
Opening angle stop Y (mm)
Without FHo x 0.44 + 38
104° FHo x 0.24 + 34
83° 0
FHo Upper front height
The larger front must be at the top!

Front assembly



Theoret. cabinet height TKH (mm) X (mm)
177H3100 | 175H5400 |
177H3100E | 177H5400E
177H3100E10
| 177H5100
| 175H3100 |
175H4100
480–549 FHo / 2 + 70 FHo / 2 + 68
550–1040 FHo / 2 + 47 FHo / 2 + 45
FHo Upper front height
FHu Lower front height
FAu Bottom front overlay
SFA Front overlay of the side panel

CLIP top 120° hinge



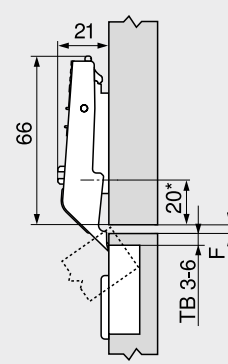
TB Drilling distance
F Gap
FA Front overlay
() CLIP top 120° special hinge

Drilling distance TB

MD	Front overlay FA (mm)																		
	5	6	7	8	9	10	11	12	13	14	15	16	17						
0																3	4	5	6
3									3	4	5	6							
6					3	4	5	6											
9	3	4	5	6															

MD Mounting plate spacing (mm)
With the CLIP top 120° special hinge, the front overlay is always 2 mm larger

CLIP top centre hinge



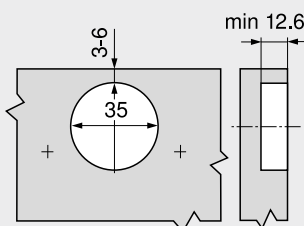
TB Drilling distance
F Min. gap 1.5 mm
* 37 mm for cruciform mounting plates (37/32)

Drilling distance TB

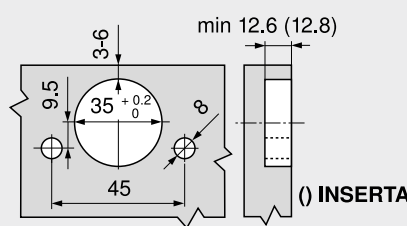
MD	Horizontal gap F (mm) between fronts							
	3	4	5	6				
0								
3					6	5	4	3
6								
9								

MD Mounting plate spacing (mm)

Screw-on



INSERTA | EXPANDO



Page instructions

Overview – AVENTOS HF	23
Order specification – wooden fronts and wide alu frames	24
Planning – Blum distance bumper	33
Planning – SERVO-DRIVE switch	33
Machine directive	665

Assembly, removal and adjustment



Short-URL
www.blum.com/a110